

BETTER TOGETHER

Leadership & Community Partnerships

Behavioral health solutions require collaboration across healthcare, housing, education, and public safety systems. AllHealth Network works alongside **hundreds of organizations across Colorado** to ensure individuals receive coordinated care where they live, learn, and work. These partnerships help expand access, reduce fragmentation, and strengthen recovery pathways for individuals and families.

Board of Directors

Anne Mounts
Board Chair
Governance Committee | Compensation Committee

Alphonso Hawkins
Finance Committee Chair

Steve Bradley
Governance Committee

Eula Adams
Finance Committee

Stephanie Crawford-Goetz, Ph.D.

Mike Williams
Vice Chair
Finance Committee

Jothi Ravindran
Governance Committee | Compensation Committee

Commissioner Carrie L. Warren-Gully
Governance Committee

Barbara Brannen
Compensation Committee Chair

Darren Lish, M.D.

Jadon Webb, MD, Ph.D.

A Special Thank You to:

18th Judicial District
23rd Judicial District
Advent Health
Arapahoe County
Arapahoe County Sheriff Department
Castle Rock Police Department
Cherry Creek School District
City of Aurora
Colorado Access
Colorado Behavioral Health Administration (BHA)
Colorado Coalition for the Homeless
Colorado Department of Local Affairs (DOLA)
Colorado Department of Personnel & Administration (DPA)
Denver Health

Douglas County
Douglas County School District
Douglas County Sheriff Department
Englewood Police Department
Englewood Schools
Greenwood Village Police Department
HealthONE
Kaiser Permanente
Littleton Police Department
Littleton Public Schools
Lone Tree Police Department
Sheridan Police Department
Sheridan School District
Signal Behavioral Health Network



ALL TOGETHER.

COMPREHENSIVE CARE. STATEWIDE IMPACT.

2025 Impact Report

(303) 730-8858

www.allhealthnetwork.org

A CONNECTED, COMPREHENSIVE APPROACH TO CARE



Who We Are

AllHealth Network transforms lives across Colorado.

For nearly 70 years, we have built a comprehensive behavioral health network designed to meet people wherever they are — from first assessment to long-term recovery.

Our 700+ team members provide:

Immediate access through a no-wait Assessment Center

24/7 crisis stabilization services

Therapy and psychiatry for children, teens, and adults

Residential and outpatient substance use treatment

Integrated services in schools, courts, and community settings

We are a coordinated system designed for seamless movement across levels of care as needs change.

WHEN ACCESS IS SIMPLE, RECOVERY BEGINS SOONER.

A Note from our President and CEO

WILLIAM HENRICKS



Dear Community,

At AllHealth Network, we believe that real change begins with a courageous decision—the decision to seek treatment for oneself or for a loved one. Every day, we serve individuals who reach that moment and say, “It’s time for a change. I want life to be better.” We honor that courage by treating the people we serve not simply as clients, but as partners, working together to strengthen lives and build healthier communities across Colorado.

Supporting those first steps is at the heart of everything we do. It is why we created a statewide assessment and referral network, connecting more people to the care they need when they need it. It also drives our continued focus on delivering high-quality treatment and achieving meaningful outcomes for the individuals and families who place their trust in us.

We know that the quality of care we provide begins with our people. That is why we invest intentionally in supporting and retaining exceptional staff, ensuring they have the tools, resources, and support needed to serve others well. This commitment has helped make AllHealth Network a highly desirable place to work, reflected in industry-leading retention and recognition as a Top Denver Workplace for eight consecutive years and a USA Today National Top Workplace for three years.

In recent years, we have also expanded our impact through meaningful partnerships across the state. Our merger with Harmony Foundation strengthened the continuum of care for individuals with substance use disorders, while our work at Sage Ridge, Colorado’s new 200-bed supportive residential program, is helping individuals experiencing homelessness access detox, residential, and outpatient services, with the time and support needed to achieve lasting stability.

As we look ahead, our focus remains clear: meeting people where they are and walking alongside them on their journey toward recovery. Thank you for your continued partnership in this work and for helping make lasting change possible across our communities.

Sincerely,

William Henricks



ACCESS TO CARE FOR ALL COLORADANS

Statewide Assessment & Referral Program

Our no-wait Assessment & Referral Program ensures that anyone, regardless of insurance status, age, or geography, can immediately connect with a mental health care professional virtually or in-person (where possible).

We provide:

- Same-day and next-day behavioral health assessments
- Evaluations for mental health, substance use, ADHD, early childhood, eating disorders, and geriatric needs
- Clear, individualized recommendations for next steps

Following assessment, individuals are connected to the appropriate level of care—whether within AllHealth Network or through trusted referral partnerships.



AllHealth Network integrates behavioral health services within:



40+ schools



Judicial districts and courts



County systems



Community partnerships across Colorado

By embedding clinicians in trusted community settings, we reduce stigma and normalize behavioral health care.

“I called on a Tuesday, and was able to get an assessment the very next day with a referral for care.”
- Recent Client

ACCESS BY NUMBERS



IN 2025



Average LESS THAN 2 DAYS from request to intake



NO WAIT for Assessment & Referral program appointments



24/7 WALK-IN crisis programs



Groups available to join WITHIN DAYS



Outpatient children's services available IMMEDIATELY

ACCESS WITHOUT FRAGMENTATION, DELAYS OR CONFUSION

Too often, behavioral health systems force individuals to navigate multiple agencies, repeat their stories, and wait between levels of care. Our connected network provides seamless care that evolves as needs change—without restarting the process.

Assessment → Therapy → Psychiatry → Crisis Services → Residential → Community-Based Recovery

In 2025, AllHealth Network served **more than 20,000 Coloradans** across 13 Denver metro locations and Harmony Residential Recovery in Estes Park.



SUPPORTING RECOVERY AT EVERY STEP

Substance use recovery looks different for every person. At AllHealth Network, we are working to expand recovery pathways that meet people where they are and support long-term healing. Two important parts of our continuum are **Harmony Recovery** and the **Sage Ridge Supportive Residential Community**.

Together, these programs help individuals stabilize, recover, and move toward lasting wellbeing.

Harmony Recovery

A Foundation for Recovery

For more than 55 years, Harmony Recovery has helped individuals and families break cycles of addiction in a structured, therapeutic environment. Located in Estes Park, Harmony offers a peaceful setting where individuals can step away from the pressures of daily life and focus on recovery. Treatment is individualized and grounded in evidence-based approaches that address both the physical and psychological aspects of addiction.

For many individuals, Harmony represents the first step toward recovery as a place to stabilize, reflect, and begin building the skills needed for long-term healing.



Harmony provides:

- Medical detox and withdrawal management
- Co-occurring mental health and substance use treatment
- Residential stabilization
- Intensive outpatient programming
- Family-centered recovery support



Sage Ridge

Sage Ridge integrates:

- Supportive housing
- Detox and substance use residential
- Medication-assisted treatment
- Therapy and psychiatric services
- Peer recovery support
- Vocational and life-skills programming

Stability That Sustains Recovery

For some individuals, recovery requires more than treatment alone. Housing instability, chronic health conditions, and untreated behavioral health needs can make it difficult to maintain progress.

The Sage Ridge Supportive Residential Community was created to address those challenges through a collaborative model that integrates housing and care.

Developed through a partnership among AllHealth Network, the Colorado Coalition for the Homeless, Signal Behavioral Health Network, and the State of Colorado, Sage Ridge provides a coordinated recovery environment where individuals can access multiple supports in one place. Anyone on the campus can access AllHealth Network's array of mental health and substance use support at any time during their stay.

By aligning housing, treatment, and recovery services, Sage Ridge helps individuals move beyond cycles of crisis and toward stability.

+200

Residents

Can reside at Sage Ridge at any one time.

2

Years

Residents can stay and receive services for up to 2 years.

MEASURING WHAT MATTERS

Compassion is at the heart of what we do—and measurement keeps us moving forward.

IN 2025



73% of clinical teams utilizing **Measurement-Based Care**



4.6 out of 5 average client satisfaction



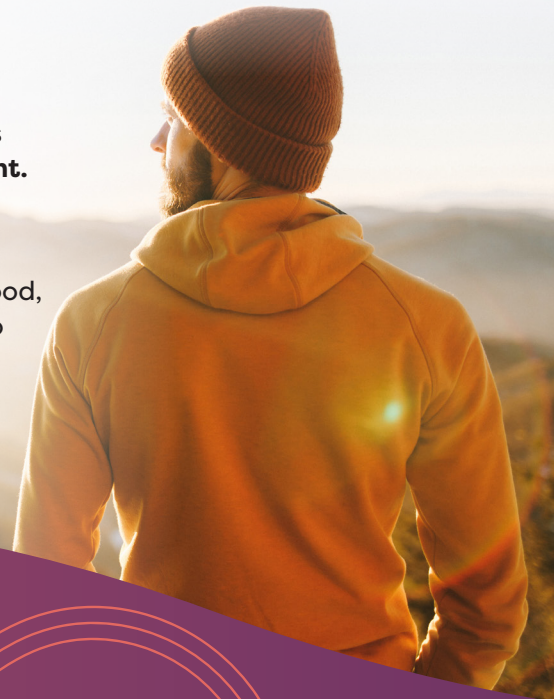
Strong therapeutic **alliance scores** across teams



20–30% of therapy outcomes depend on the **client-therapist relationship**.

AllHealth Network uses **Measurement-Based Care (MBC)** to track progress throughout treatment. Through brief, standardized assessments, clinicians and clients monitor symptoms over time and adjust care when needed. This approach ensures treatment remains **responsive, personalized, and focused on measurable improvement**.

Research consistently shows that one of the strongest predictors of successful therapy is the **therapeutic alliance—the relationship between a client and their clinician**. When individuals feel understood, supported, and actively involved in their care, they are more likely to engage in treatment and experience meaningful improvement.



CARING FOR EACH OTHER, EVERY DAY.

Behind every assessment, therapy session, and recovery journey is a team of dedicated professionals committed to improving lives across Colorado.

AllHealth Network’s clinicians, case managers, peer specialists, nurses, psychiatrists, and support staff work every day to ensure individuals and families receive compassionate, high-quality care. Their expertise and commitment make it possible for thousands of Coloradans to access behavioral health services each year.

In a field facing significant workforce shortages and high burnout rates, creating a supportive workplace culture is essential. At AllHealth Network, we invest in our people so they can continue doing the work that matters most—helping others heal and recover.



2019-2025
Denver Post Top Workplace



2023-2025
USAToday Top Workplace

<14% Annual Staff Turnover

(less than half the industry average)

700+ Dedicated Professionals

serving communities across Colorado

“If I could summarize AllHealth Network in one word, I’d use **SUPPORTIVE**. No matter what we’re working on or going through, we have the support of the organization to get through it.”

- Feedback from Employee Surveys

STEWARDSHIP & SUSTAINABILITY

Delivering high-quality behavioral health care requires strong operations, responsible financial stewardship, and thoughtful investment in people and programs.

Through comprehensive mental health and substance use services across the Denver metro region, with residential substance use treatment and medical detox services in Watkins and Estes Park, AllHealth Network represents a growing behavioral health system serving communities across Colorado.

By managing resources responsibly and reinvesting in care, our organization continues to expand access to services that help individuals and families stabilize, recover, and move forward.

Financial Highlights

Combined System Impact

\$105M+

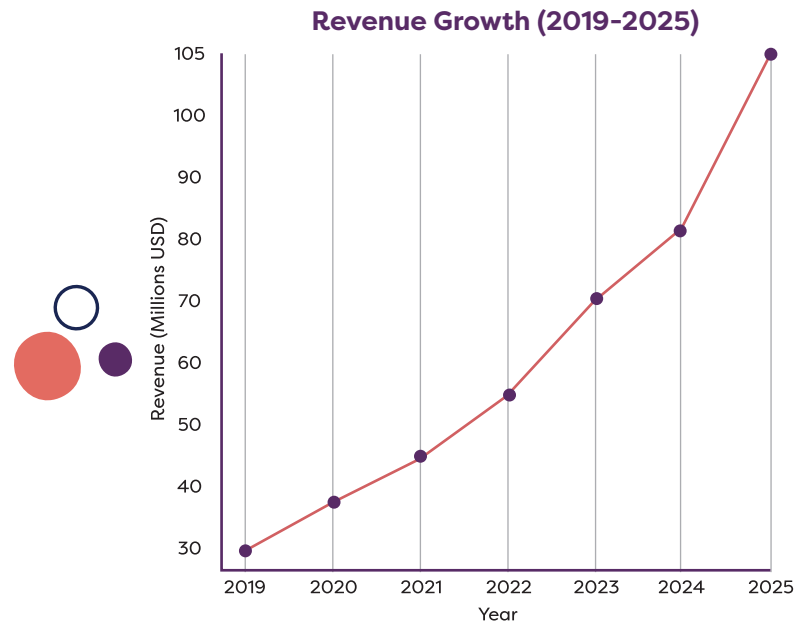
Annual Revenue Supporting Behavioral Health Services

\$58M+

Total Organizational Assets

560+

Clinical Professionals delivering care across Colorado



WHERE RESOURCES ARE INVESTED

86%

of revenue generated through behavioral health service delivery

20,000+

Coloradans served each year

250+

community partners supporting coordinated care

COLORADO CAN DO BETTER

DIVERT TO CARE, NOT JAIL.

Colorado's competency restoration system is under strain.

Orders have increased dramatically over the past two decades. Individuals with serious mental illness and low-level charges often wait extended periods in jail before receiving inpatient restoration services.

This is costly, ineffective, and inhumane.

AllHealth Network proposes a diversion-based model:

- Leverage AllHealth Network's 16-Bed Acute Treatment Unit (ATU) as an alternative to incarceration for individuals who are charged with low-level crimes and need an inpatient stay for stabilization.
- Utilize established clinical operations to accept or start both inpatient civil commitment and outpatient certifications for those who require a court order to ensure participation in treatment.
- Connect more individuals to Forensic Assertive Community Treatment, a community-based wrap around model of care delivered by a highly skilled and diverse clinical team. *This team supports individuals discharged from the state hospitals, detention settings, or other inpatient facilities providing intensive counseling, case management, peer support, psychiatric and nursing services focused on mental and behavioral health recovery.*
- Connect more individuals to competency restoration education classes as a part of the continuum for those who are in the competency system.

Colorado has the opportunity to lead with a smarter, more effective restoration system.

AllHealth Network stands ready to partner in building it.

